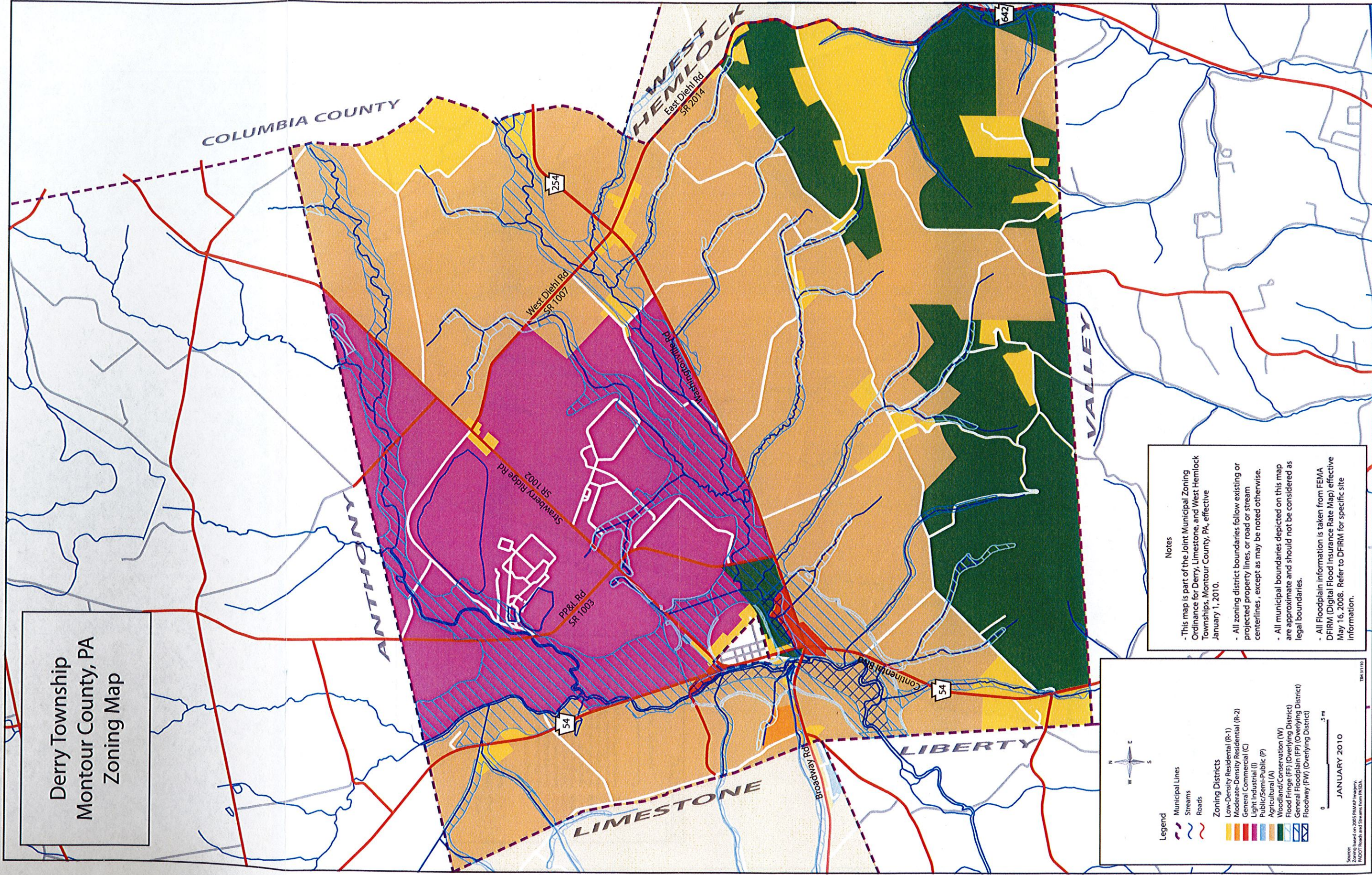


Derry Township  
Montour County, PA  
Zoning Map



**Notes**

- This map is part of the Joint Municipal Zoning Ordinance for Derry, Limestone, and West Hemlock Townships, Montour County, PA, effective January 1, 2010.
- All zoning district boundaries follow existing or projected property lines, or road or stream centerlines, except as may be noted otherwise.
- All municipal boundaries depicted on this map are approximate and should not be considered as legal boundaries.
- All Floodplain information is taken from FEMA DFIRM (Digital Flood Insurance Rate Map) effective May 16, 2008. Refer to DFIRM for specific site information.

**Legend**

- Municipal Lines
- Streams
- Roads

**Zoning Districts**

- Low-Density Residential (R-1)
- Moderate-Density Residential (R-2)
- General Commercial (C)
- Light Industrial (I)
- Public/Semi-Public (P)
- Agricultural (A)
- Woodland/Conservation (W)
- Flood Fringe (FF) (Overlying District)
- General Floodplain (FP) (Overlying District)
- Floodway (FW) (Overlying District)

0 0.5 m

**JANUARY 2010**

Source:  
Zoning based on 2005 PAMAP imagery.  
FLOOD Fringe and Streams from FIRM.