

Limestone Township Montour County, PA Zoning Map

Legend

- Municipal Lines
- Streams
- Roads

Zoning Districts

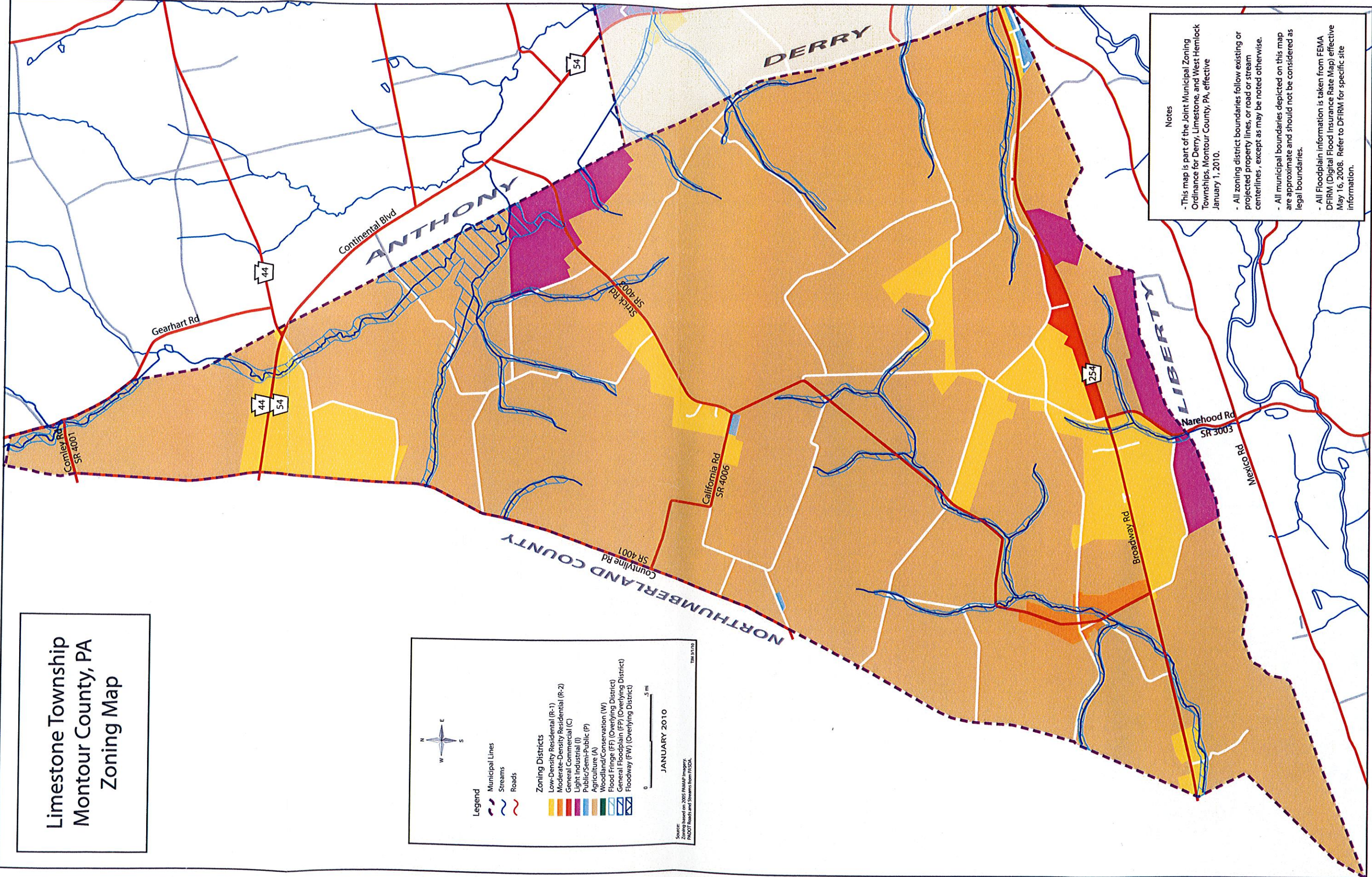
- Low-Density Residential (R-1)
- Moderate-Density Residential (R-2)
- General Commercial (C)
- Light Industrial (I)
- Public/Semi-Public (P)
- Agriculture (A)
- Woodland/Conservation (W)
- Flood Fringe (FF) (Overlying District)
- General Floodplain (FP) (Overlying District)
- Floodway (FW) (Overlying District)

0 50 ft

JANUARY 2010

Source:
Zoning based on 2005 PMAP imagery.
MDDOT Roads and Streams from PPSA.

TM 11/10



Notes

- This map is part of the Joint Municipal Zoning Ordinance for Derry, Limestone, and West Hemlock Townships, Montour County, PA, effective January 1, 2010.
- All zoning district boundaries follow existing or projected property lines, or road or stream centerlines, except as may be noted otherwise.
- All municipal boundaries depicted on this map are approximate and should not be considered as legal boundaries.
- All Floodplain information is taken from FEMA DFIRM (Digital Flood Insurance Rate Map) effective May 16, 2008. Refer to DFIRM for specific site information.